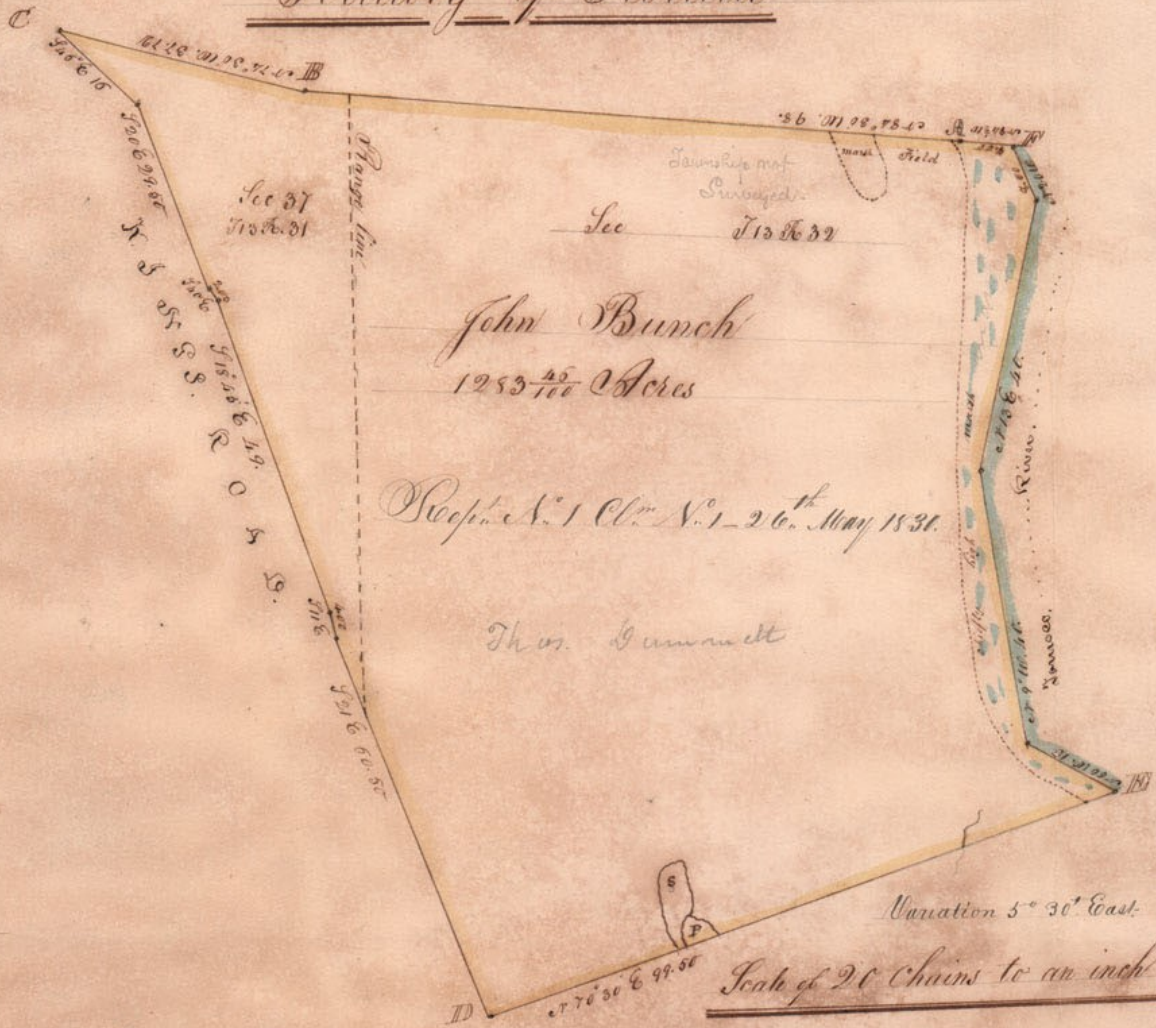


Land District East  
Territory of Florida



Reference to an order from the Surveyor General of Florida and in conformity with Act of Congress for the Surveyors of East Florida continued by Act of Congress passed 26<sup>th</sup> May 1830 I have surveyed measured and marked the boundaries of a tract of land claimed by John Bunch situate west of Tomoko River at Tomoko enclosed in Section 27 Town-ship 35 Range 11<sup>th</sup> South East and Section 18 Township 36<sup>th</sup> Range 11<sup>th</sup> South East and is bounded as follows Beginning at a Cypress post on an old causeway at which there bears cabbage Palm to S 66° 33' 00" Ch marked X Cabbage Palm to S 62° 57' 00" Ch marked A Thence N 61° 30' 00" Ch to B at which established a post where bears Pine to S 19° 10' 00" Ch marked B Thence N 74° 00' 00" Ch to Kings Road at which established a post where bears Pine to S 66° 07' 00" Ch marked D Thence along the meanders of the Kings Road on the Eastern margin S 46° 16' 00" Ch S 66° 29' 00" Ch S 46° 02' 00" Ch S 13° 48' 49" Ch S 87° 04' 00" Ch S 21° 00' 00" Ch to D at which established a post being on the Eastern margin of Kings Road where bears Pine to S 68° 12' 00" Ch marked E Thence N 70° 00' 00" Ch along an old line S 67° 30' 00" Ch to Tomoko River at which being at C set a post where bears cabbage Palm to S 65° 30' 00" Ch marked F Cabbage Palm to S 76° 45' 00" Ch marked G Thence along the meanders of Tomoko River on Western margin N 60° 15' 00" Ch N 91° 40' 00" Ch N 15° 40' 00" Ch N 15° 00' 00" Ch to D on the West margin of Tomoko River at which established Cypress post Thence N 64° 00' 00" Ch to the beginning of the survey containing Twelve Hundred and Eighty Three <sup>2/10</sup> Acres and having such town and marks as are here represented

John W. Dalt  
Thomas Jewett } Chain-men.  
Robert Green }

Henry Washington Dep't Sur

Examined and compared with the field notes. Approved July 1837  
James D. Miller Dep't Sur